

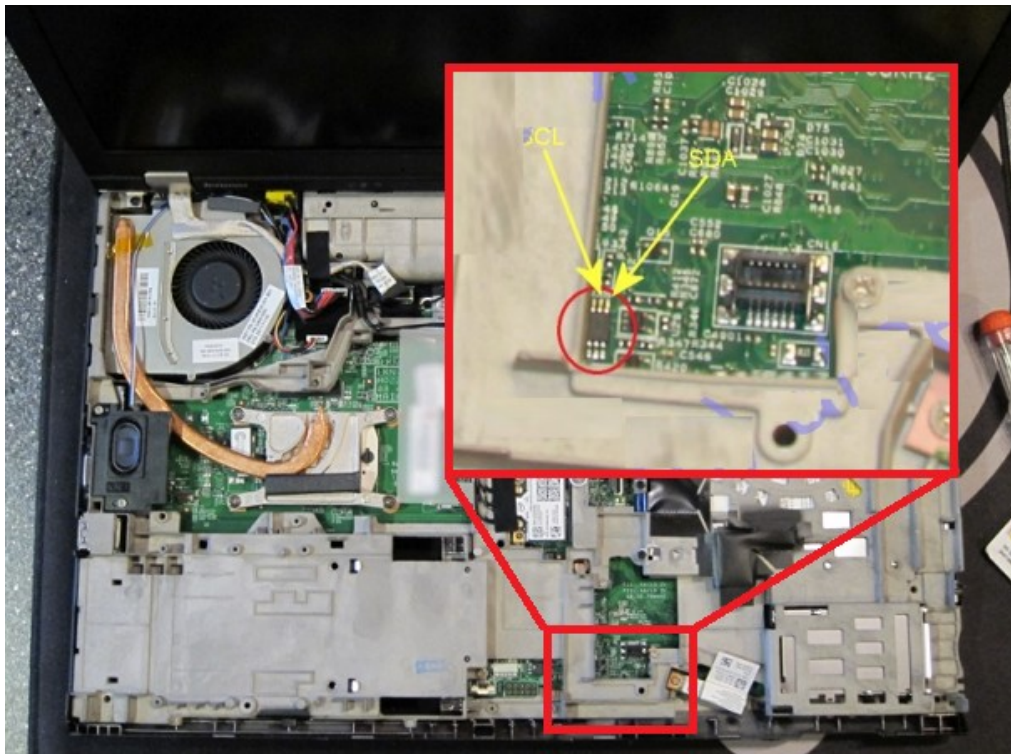
Lenovo ThinkPad T520/W520

WARNING! Be careful when disassembling laptop. If not handled correctly, there is a chance of damaging your motherboard. We do not take any responsibility and we are not liable for any damage caused through use of this guide.

1. Disassemble laptop to get access to security chip. The chip is located at the bottom of motherboard. You need to disassemble computer this way, that it would be possible to power it on when the security chip is revealed.

For step by step instructions use Lenovo Hardware Maintenance Manual:

https://download.lenovo.com/ibmdl/pub/pc/pccbbs/mobiles_pdf/0a60078_06.pdf



2. Reconnect keyboard.
3. Power on laptop (do not short circuit pins yet!).
4. Short circuit pins as shown
https://download.lenovo.com/ibmdl/pub/pc/pccbbs/mobiles_pdf/0a60078_06.pdf image below (use tweezers/sharp knife, do NOT solder).
5. Same time quickly press F1 several times.
6. You should enter BIOS menu without inserting password, if not, try again.
7. Reenter Supervisor and Power On passwords with blanks (just click enter for new password). **Jian Pei NOT FOR RESALE**
8. Press F10 to save settings and exit.

If you can't find the chip in this location, then you have a different motherboard and the chip can be found in this location:

