

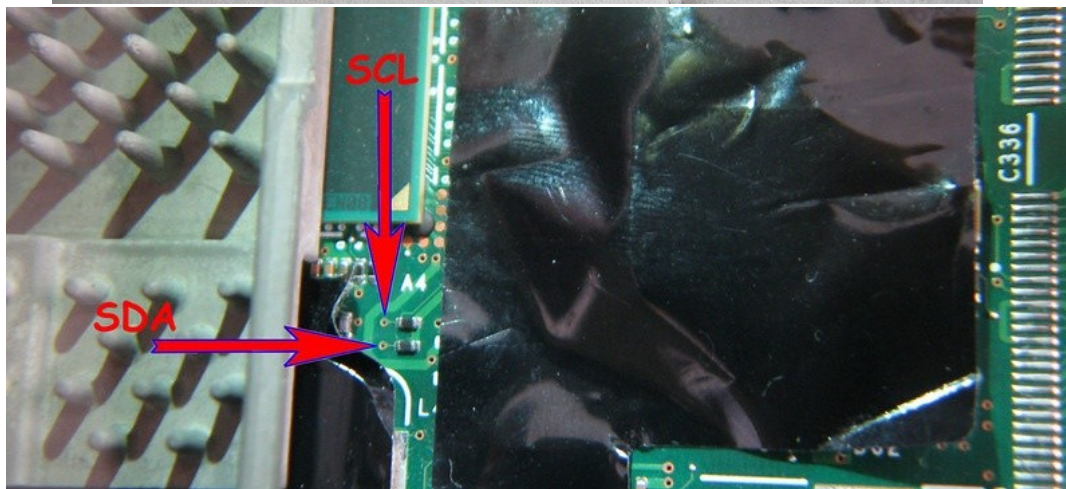
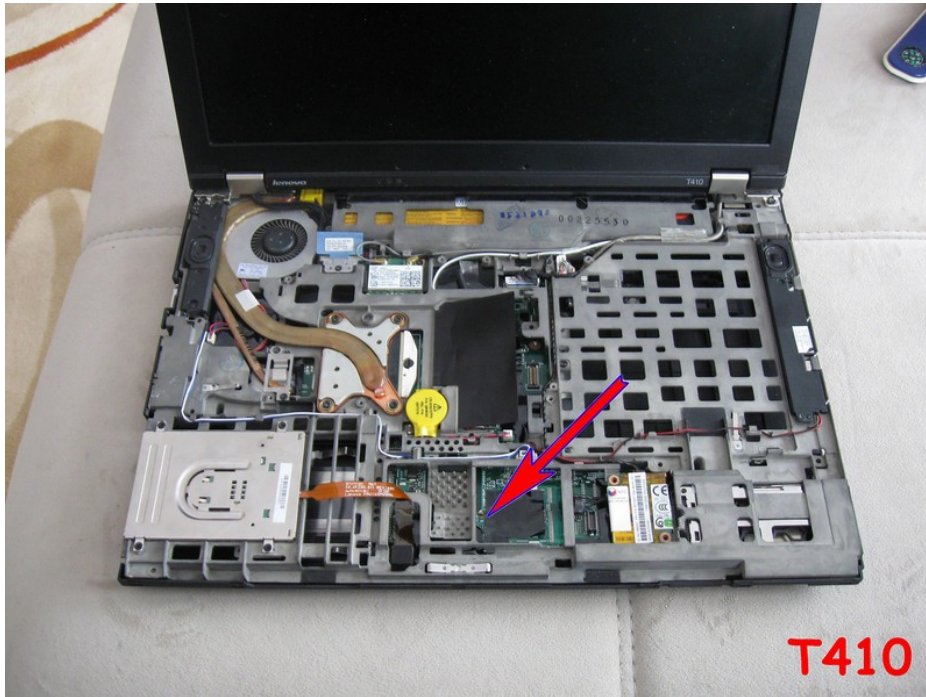
Lenovo ThinkPad T410 / T410i

WARNING! Be careful when disassembling laptop. If not handled correctly, there is a chance of damaging your motherboard. We do not take any responsibility and we are not liable for any damage caused through use of this guide.

For step by step instructions use Lenovo Hardware Maintenance Manual:

https://download.lenovo.com/ibmdl/pub/pc/pccbbs/mobiles_pdf/t410_t410i_hmm_en_63y0535_06.pdf

1. Disassemble laptop to get access to security chip. You need to remove the keyboard and palm rest:



2. Reconnect keyboard.
3. Power on laptop (do not short circuit pins yet!).
4. Short circuit pins as shown on image below (use tweezers/sharp knife, do NOT solder). (must do very quickly, quicker than 1 second) but wait until the screen backlight comes on
5. Same time quickly press F1 several times.
6. You should enter BIOS menu without inserting password, if not, try again.
7. Short pins again in BIOS. Reenter Supervisor and Power On passwords with blanks (just click enter for new password). **John Atkinson NOT FOR RESALE**
8. Press F10 to save settings and exit.
9. Reassemble computer in reverse order.