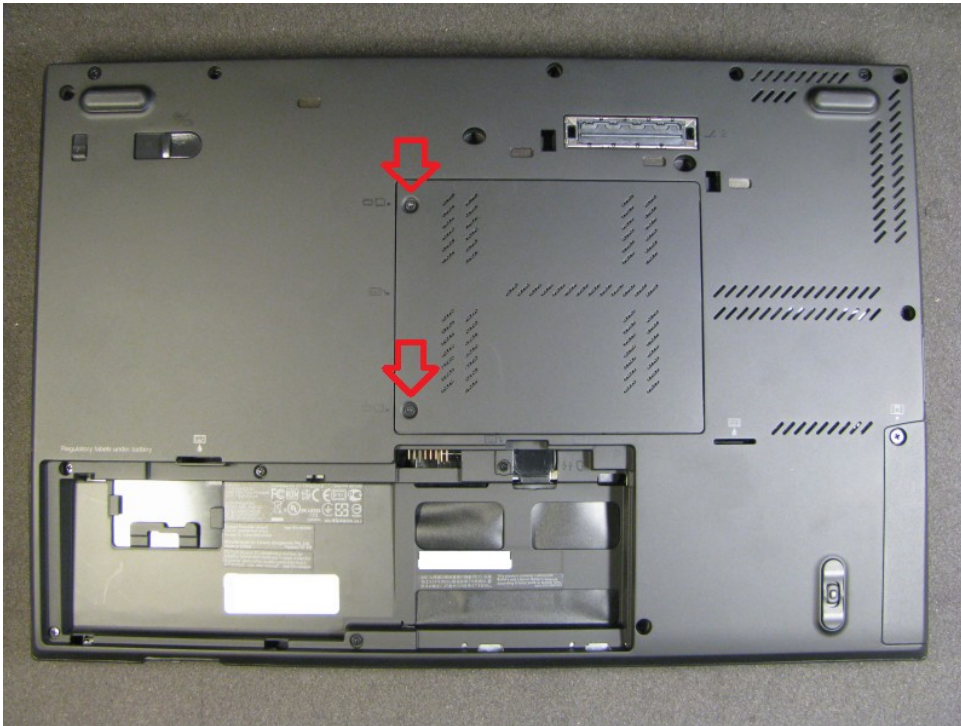


# Lenovo ThinkPad T400s T410s

**WARNING!** Be careful when disassembling laptop. If not handled correctly, there is a chance of damaging your motherboard. We do not take any responsibility and we are not liable for any damage caused through use of this guide.

Disassemble laptop to get access to security chip. The chip is located under the keyboard on top of the motherboard. You need to disassemble computer this way, that it would be possible to power it on when the security chip is revealed.

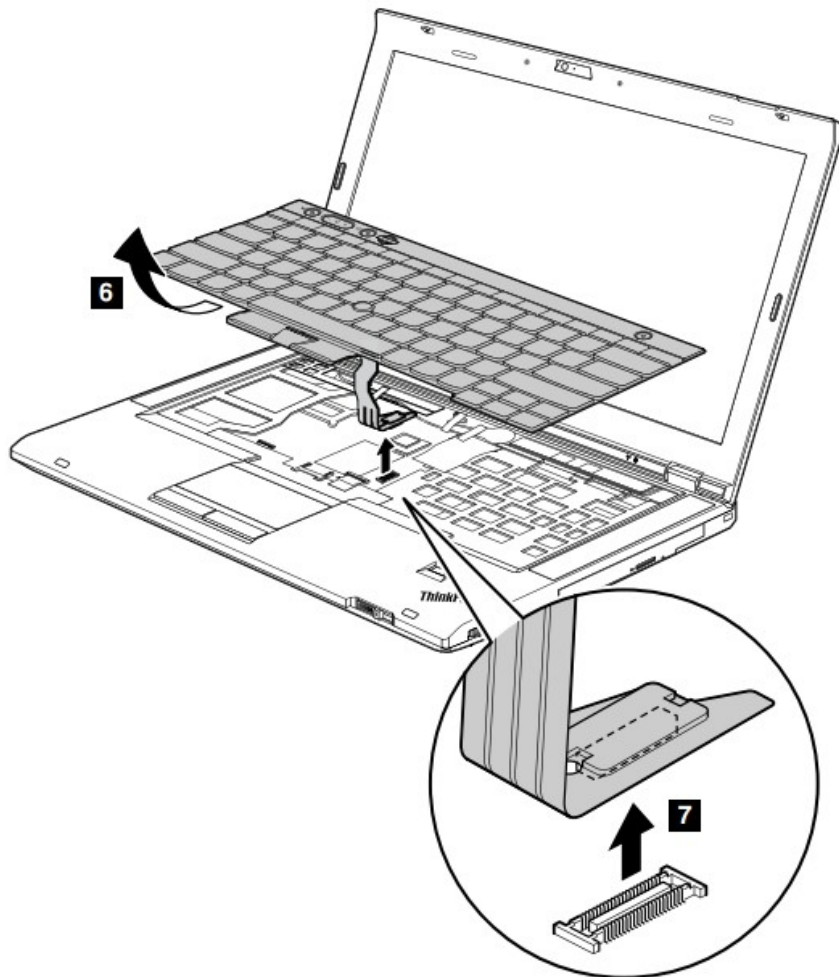
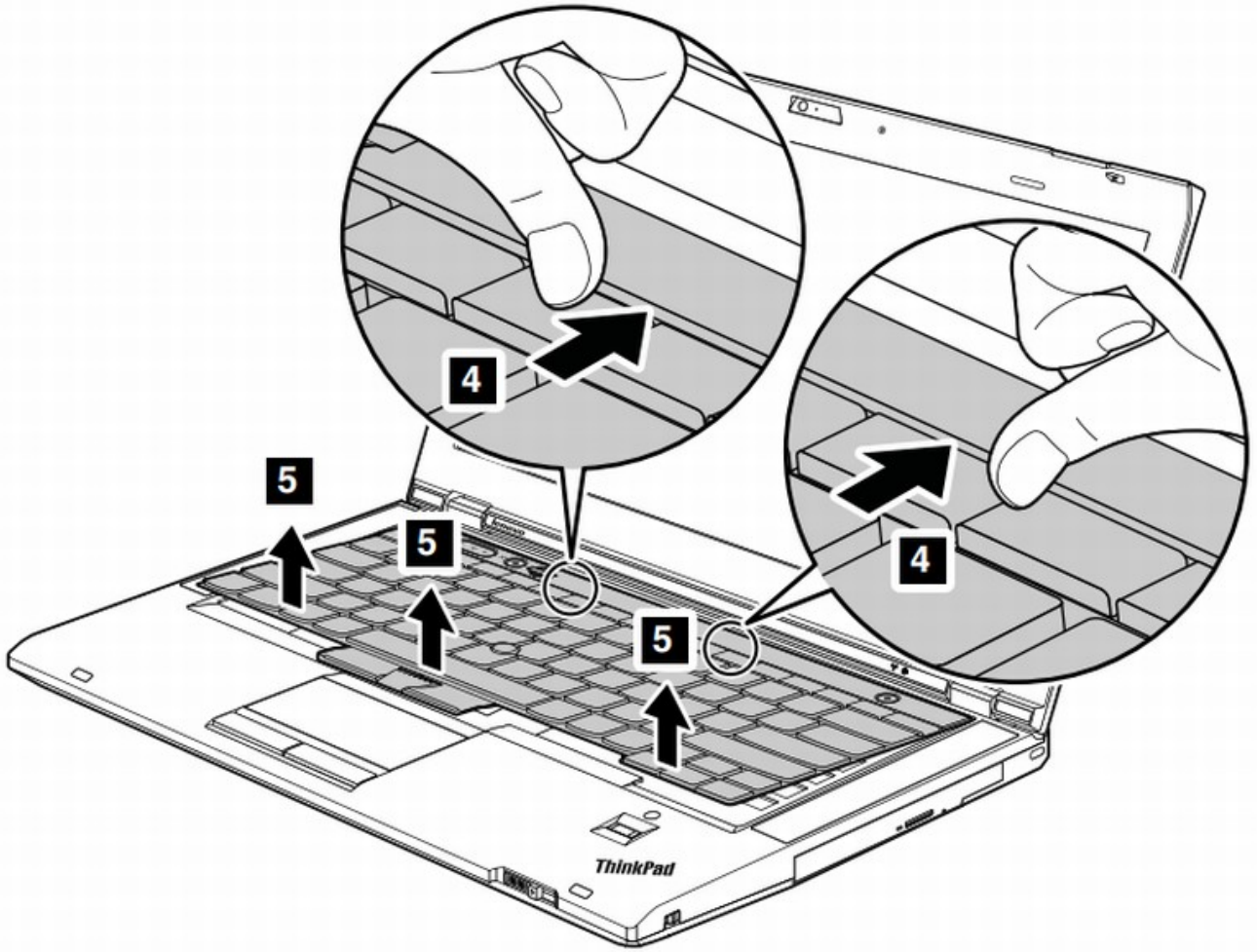
1. First remove bottom cover with unscrewing these 2 screws.



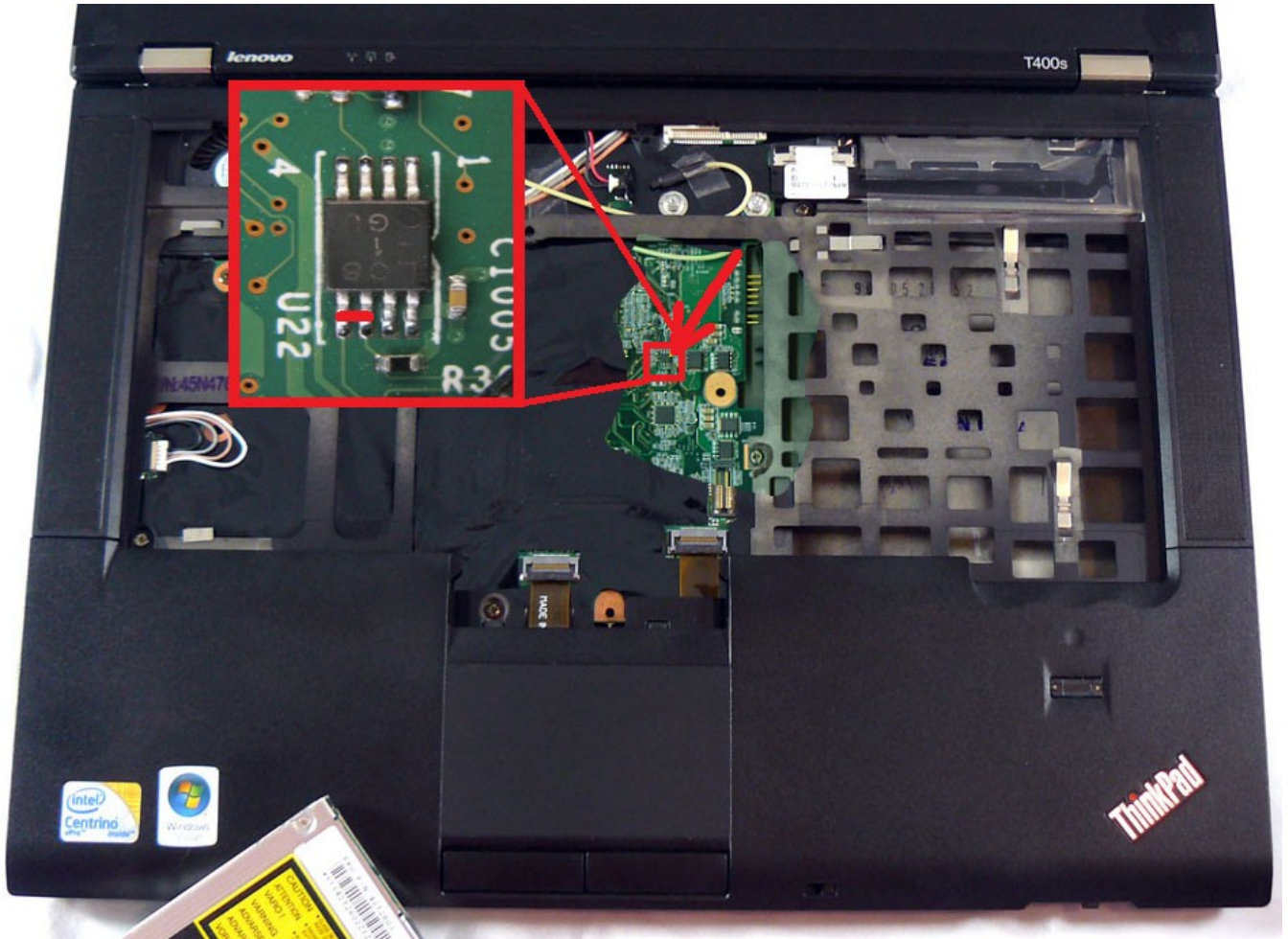
2. To remove keyboard unscrew these 2 screws.



3. Remove keyboard as shown below.
4. Peel away plastic film to reveal security chip.



7. Reconnect keyboard.
8. Power on laptop (do not short circuit pins yet!).
9. Short circuit pins as shown on image below (use tweezers/sharp knife, do NOT solder). must do very quickly, quicker than 1 second) but wait until the screen backlight comes on
10. Same time quickly press F1 several times.
11. You should enter BIOS menu without inserting password, if not, try again.
12. Short pins again in BIOS. Reenter Supervisor and Power On passwords with blanks (just click enter for new password). **yudy monsalve NOT FOR RESALE**
13. Press F10 to save settings and exit.



14. Reassemble computer in reverse order.

Alternate location if your motherboard is different:

